

The Cradle Coast Regional Futures Plan



Development

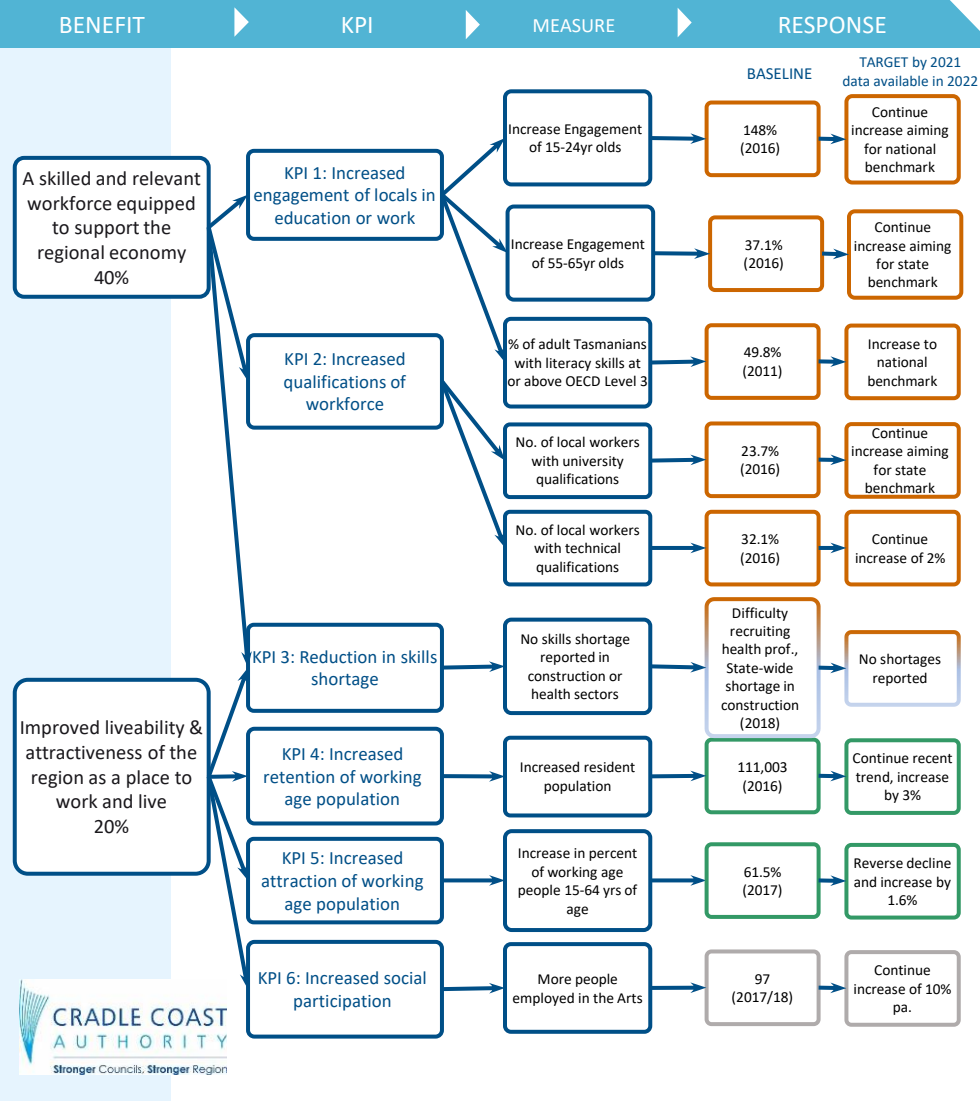
- Funded by CCA and Building Better Regions Fund.
- Reference Group established around 2016 with UTAS, Burnie City Council, State and Federal Government representatives and others.
- Regional Australia Institute rolled out its “Regional Pathfinder” process.
- More than 100 stakeholders contributed through workshops and one-on-one consultation.
- Published in November 2018.

What it looks like

- All about boosting regional growth and fostering a more resilient economy to lift the living standards of all residents in the region.
- Or, “more jobs, better jobs”.
- Two key features
 1. Regional Investment Framework
 2. New approach to regional governance - “joined up economic development”

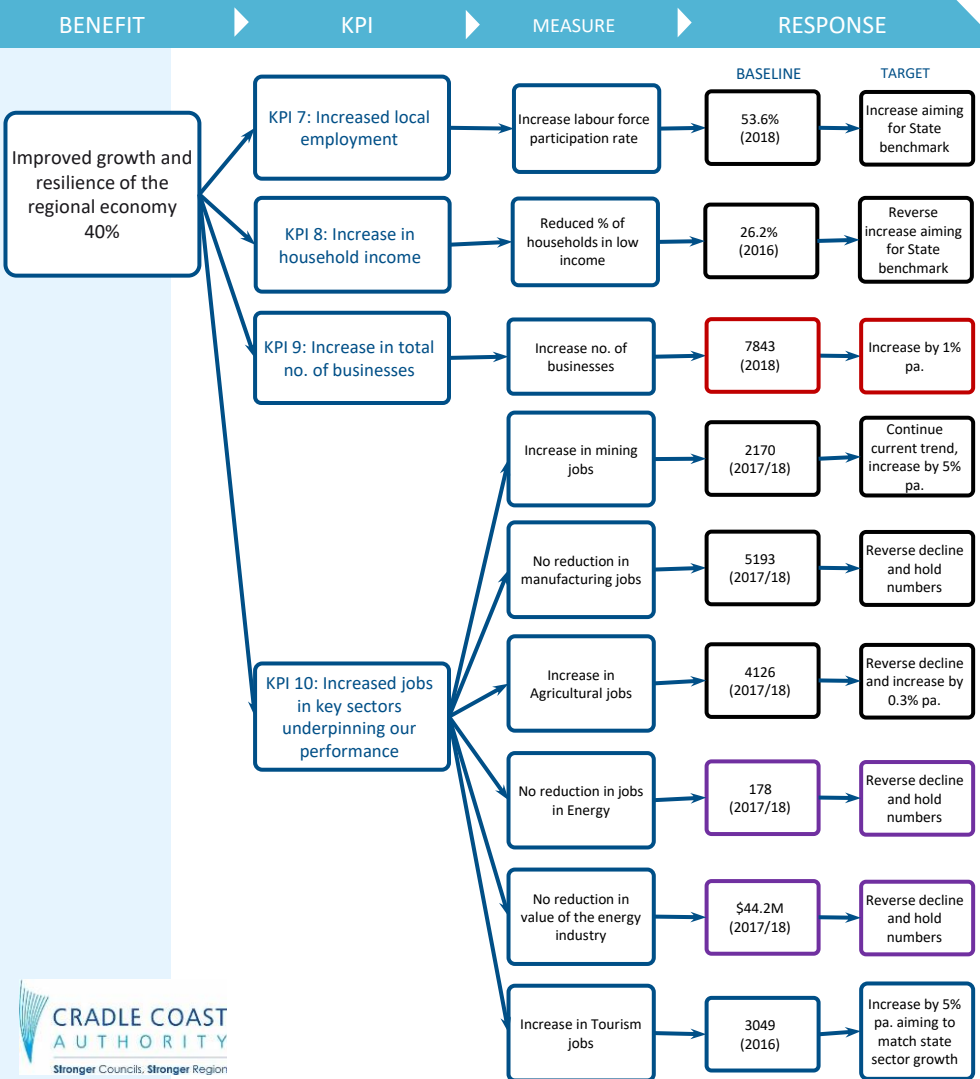
Boosting regional growth and fostering a more resilient economy to lift the living standards of all residents in the region

BENEFITS MAP



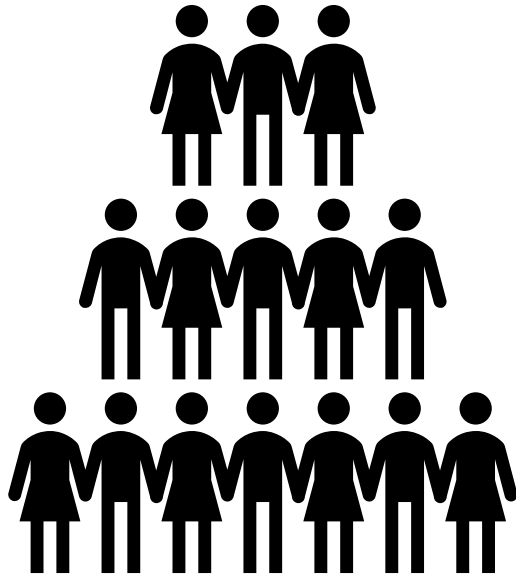
Boosting regional growth and fostering a more resilient economy to lift the living standards of all residents in the region

BENEFITS MAP

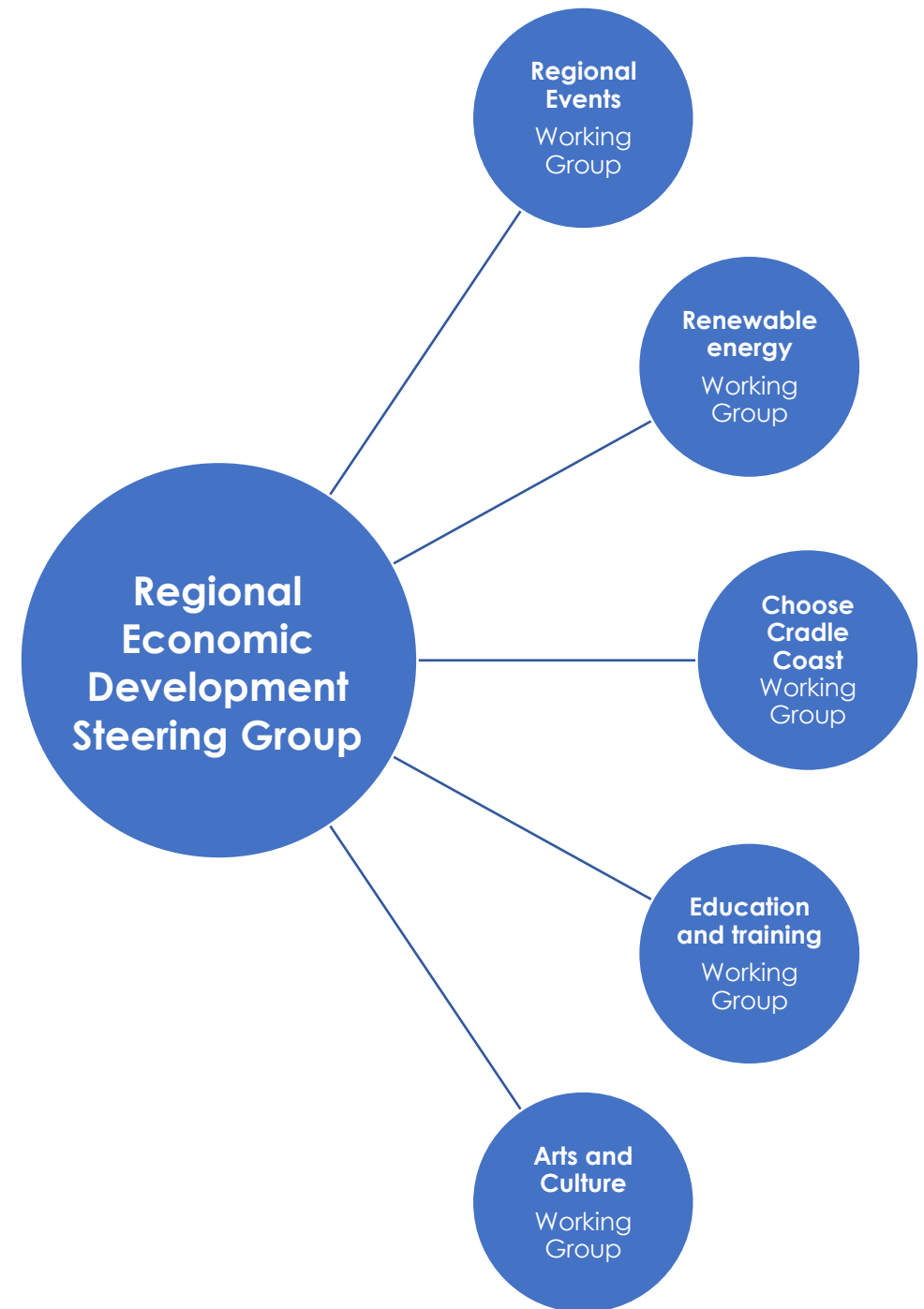




RESEARCH



CORE TEAM



REDSG

- Sheree Vertigan AM - principal, education consultant
- Professor Jim Cavaye - UTAS
- Jim Ertler - Premium Fresh
- Lara Hendriks - Dept. of State Growth
- Tim Hess - Petuna, freight and logistics
- Ian Jones - Business North West, international trade
- Cr Vonette Mead – MeadCon
- Craig Perkins - RDA Tasmania
- Stacey Sheehan - real estate, strong links to DCCI
- Catherine Stark - former ecoddev officer, Seven Sheds Brewery

Thank you

Questions?